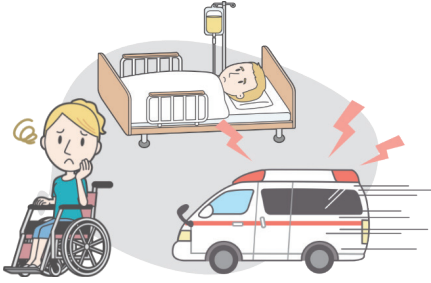


# Worry-less travel to Okinawa



~Better to have an overseas travel insurance, just in case~



Surprisingly, **one in 25 foreign visitors** gets **sick or injured** while traveling in Japan!

\*Source: Japan Tourism Agency Survey on Medical Care of Foreign Travelers Visiting Japan



Even a few days in the hospital may cost hundreds of **thousands to millions of yen** in medical care.

## What is an overseas travel insurance?

In case of injury or illness during your travel...



The expenses such as medical consultation fee



cost of surgery



Your repatriation expenses



Travel expenses for your family members to their destination

will be covered.

Note: foreign travelers with a history of unpaid medical expenses may be denied entry into Japan subsequently.

It would be best to buy overseas travel insurance when traveling to Okinawa.



Even after entry into Japan

Here is Information for purchase  
of Travel Insurance

[https://www.jnto.go.jp/emergency/eng/do\\_travel\\_insurance02.html](https://www.jnto.go.jp/emergency/eng/do_travel_insurance02.html)



# Worry-less travel to Okinawa



~Better to have an overseas travel insurance, just in case~

## **i** For sudden illness or injury

In case of sudden illness or injury, please feel free to contact us.  
Interpreters will help you.

### Free Phone Medical Consultation

(Telephone helpline for sudden illness or injury of foreign tourists)



# 0570-050-235

**Eligibility for Service: Foreign Tourists Themselves, Their Companions, or Staff Members of Facilities for Foreign Tourists.**

We also welcome inquiries from tourism companies, excluding Okinawan residents.

**Reception Hour:** 24/7, 365 days a year

**Available Language service:**

English, Chinese (Mandarin, Cantonese), Korean, Portuguese, Tagalog, Vietnamese, Spanish, Indonesia, Thai, Nepali, French, Russian, Burmese, Hindi, Mongol, Persian, Taiwanese (total of 18 languages)

**You can use the URL to contact us even without your phone number.**

\*Internet communication is used. You must be connected to the Internet.



### Examples of Possible Consultation situations

- I have a fever and need your help for referral to a hospital.
- I was injured at sea and wonder, if I should go to the hospital.

### Common Examples of Sudden Illness or Injury While Traveling

**Fever**



**Stomach Ache/  
Vomit**



**Fracture  
due to a fall**



Consultations for the above symptoms are also available.